



Environmental Efforts by Ranchers & the Marin RCD in Marin County



**TOMALES BAY WATERSHED
AGRICULTURAL LANDS
MARIN COUNTY, CA**

STATE OF CALIFORNIA

Marin County

STATE OF CALIFORNIA

Marin County

**TOMALES BAY WATERSHED
AGRICULTURAL LANDS
MARIN COUNTY, CA**

PACIFIC OCEAN

Point Reyes National Seashore

Tomales Bay

Marin County

STATE OF CALIFORNIA

0 2 4 8 Miles

Legend:

- TOMALES BAY WATERSHED
- NATIONAL PARK AGRICULTURAL LAND
- GRAZING LAND

**TOMALES BAY WATERSHED
AGRICULTURAL LANDS
MARIN COUNTY, CA**

PACIFIC OCEAN

Point Reyes National Seashore

Tomales Bay


Marin County

STATE OF CALIFORNIA

0 2 4 8 Miles

Legend:

- TOMALES BAY WATERSHED
- NATIONAL PARK AGRICULTURAL LAND
- GRAZING LAND

 TOMALES BAY WATERSHED
 NATIONAL PARK AGRICULTURAL LAND
 GRAZING LAND

**TOMALES BAY WATERSHED
AGRICULTURAL LANDS
MARIN COUNTY, CA**

PACIFIC OCEAN

Point Reyes National Seashore

Tomales Bay

Marin County

STATE OF CALIFORNIA

0 2 4 8 Miles

Legend:

- TOMALES BAY WATERSHED
- NATIONAL PARK AGRICULTURAL LAND
- GRAZING LAND



SITE CHARACTERISTICS: CHILENO VALLEY





PROJECT GOALS OF THE Marin Resource Conservation District

- Conservation of rangeland, cropland and forests
- Protection and improvement of water quality
- Control of soil erosion
- Riparian habitat restoration
- Active support of our district's agricultural economy and heritage





RCD PROGRAMS

& FUNDERS

SEDIMENT

State Coastal Conservancy

WATER QUALITY

State Water Resources Control Board

FISHERIES

CA Dept Fish and Wildlife

WILDLIFE HABITAT

US Fish and Wildlife Service

PINE GULCH PONDS

CA Department of Fish and Wildlife, SCC

METHANE

State Water Resources Control Board

& USDA NRCS

WEST MARIN COMPOST

USDA Natural Resources Conservation
Service, County of Marin

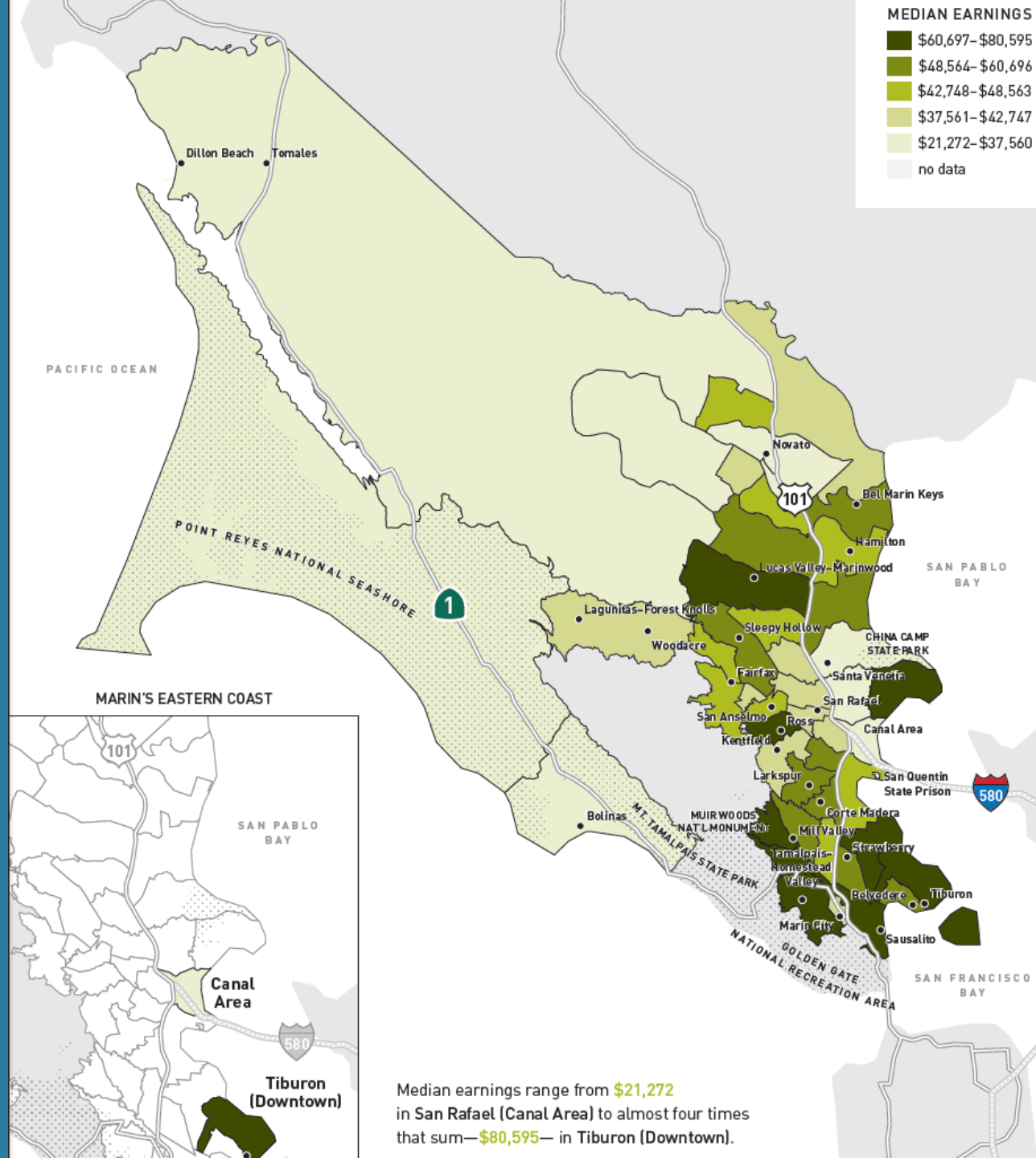
MARIN CARBON PROJECT

11th Hour, MCF, SCC, USDA, County of
Marin, MALT, Rathman Family Foundation

MARIN COASTAL PERMIT

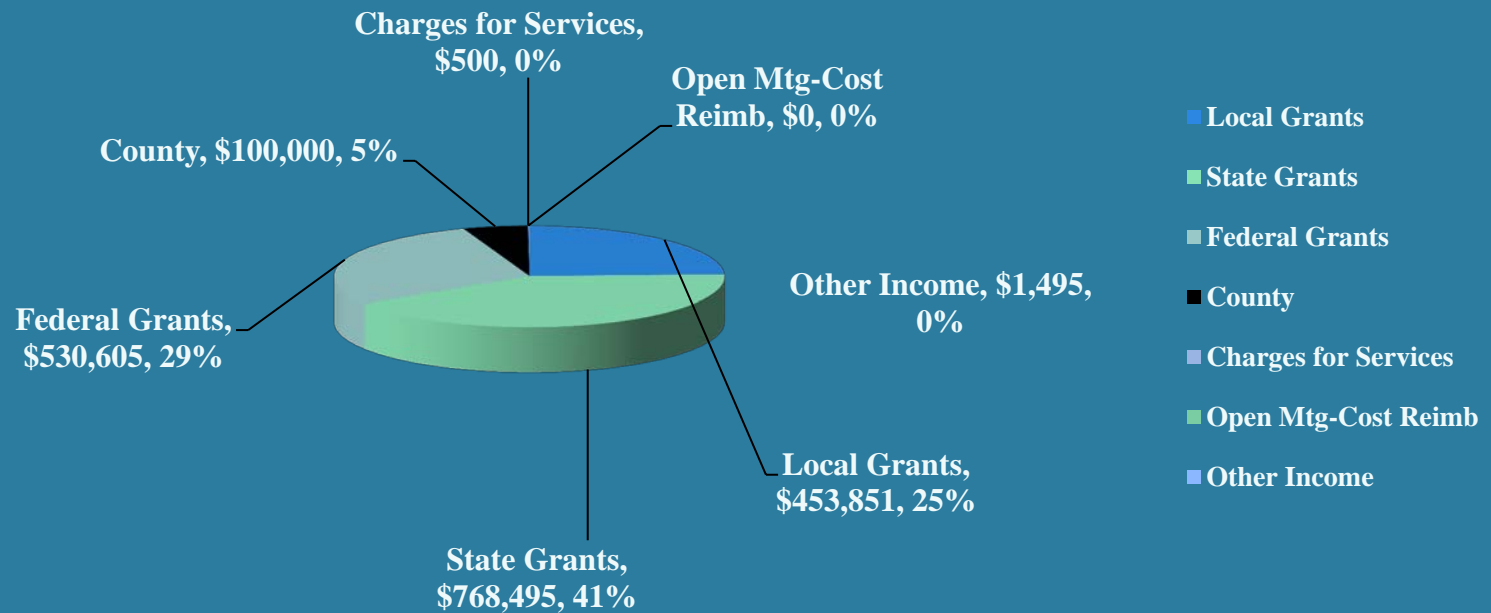
COORDINATION PROGRAM

Sustainable Conservation, SCC



RCD FUNDING

2011-2012 REVENUES BY SOURCE



* Ranchers share 10-25% of cost

INTEGRATED RANCH PLAN



Legend

Parcel Boundary

- Corda Ranch

Ranch Infrastructure

- Fencing, Existing
- Water Developments, Existing

Completed Practices

- Compost Application/ Mulching

Planned Practices

- Silvopasture
- Field/Riparian Forest Buffer
- Stream Crossing Repair
- Stream Restoration and/or Planting
- Riparian Buffer Planting
- Windbreak
- Fencing/Access Control
- Water Development
- Pipeline
- Troughs



BEFORE THE PROJECT: STEMPLE CREEK RANCH



AFTER THE PROJECT: STEMPLE CREEK RANCH



BEFORE THE PROJECT: CHILENO VALLEY RANCH



AFTER THE PROJECT: CHILENO VALLEY RANCH



RCD RESULTS – 30 Years



- \$16M applied to projects
- 300+ conservation practices
- 68 Ranchers and Farmers
- 80 on waiting list for future work
- 20 miles of stream restored
- 30 species of native plants used
- 35,000 native trees and shrubs
- 500+ STRAW volunteers
- Exponential increases in neomigratory bird counts
- Salmon sightings where previously unseen


PARTNERS



- Ranchers
- Students & Teachers
Restoring a Watershed
- Point Blue
Conservation Science
- Marin Agricultural Land
Trust
- USDA Natural
Resources
Conservation Service
- UC Cooperative
Extension Service
- Point Reyes National
Seashore
- Marin Municipal Water
District



PARTNER PERFECTION

- 
- A photograph showing four people from behind, standing in a dry, grassy field. They are looking towards a small, light-colored house in the distance. The people are wearing casual clothing: a white shirt and khaki pants, a dark blue polo shirt and dark pants, a light blue polo shirt and jeans, and a light blue t-shirt and dark pants. They are standing near a wooden fence. The background shows a hillside with trees and a clear sky.
- **GOOD, LONG TERM RELATIONSHIPS**
 - **COOPERATION, NOT COMPETITION**
 - **FREQUENT INTERACTIONS**
 - **IDENTIFICATION AS A GROUP**
 - **SERVICE PROVISION RATHER THAN EMPIRE BUILDING**

RANCHER CHARACTERISTICS

- AGE (60-80 years of age)
- RANCH TYPE
- RANCH SIZE
- MULTI-GENERATIONAL
- COMMON CULTURE
- INTER-CONNECTEDNESS
- NEWBIES





CHALLENGES

- **OVERCOMING RELUCTANCE**
- **MATCHING PRIORITIES**
- **CREATING BUY-IN**
- **BEING FAIR**
- **MAINTAINING THE RELATIONSHIP**





RANCHER MOTIVATIONS

- Ranching improvements
- Cost share
- Love seeing wildlife
- Norming
- Doing it for ?



WHAT WORKS

- MEETING RANCHERS IN THEIR WORLD
- RELATIONSHIPS/ IN FOR THE LONG HAUL
- HONESTY AND SELF DISCLOSURE/SHARING YOUR STORY
- RANCHER TO RANCHER COMMUNICATION
- HAVING A GREAT BOARD/ DEEP ROOTS





TRUST



A black and white cat is perched on a weathered wooden fence post, looking out over a vast, hilly landscape. The cat has white fur with large black patches. The background features rolling hills under a cloudy sky, with a few small buildings visible in the distance. The text "Thank you" is overlaid on the right side of the image.

Thank you